

## Summary of Projects Recommended for Access & Habitat Funding

The Access and Habitat (A&H) Board met April 13 and May 5, 2021 via Zoom to review projects recommended for funding by A&H Regional Councils (Councils). A project must receive at least four supporting votes from the Board to be recommended for funding. Below is a brief description of the funding requested, access and habitat benefits provided, and Board vote count. The A&H Board recommends funding the following thirteen projects:

### 2021-11 Jenkins Access

- A&H Funds: \$24,800.40
- Cost per Acre: \$2.40 per year for Welcome to Hunt access  
\$1.08 per year for By Permission access
- Cooperator Funds: \$1,000
- Total Project Cost: \$25,800.40
- Applicant: Rich Jenkins
- Location: Steens Mountain Wildlife Management Unit
- Access Acres: 8,187 for Welcome to Hunt access  
4,770 for By Permission access
- Project Duration: August 2021-March 2022
- Board Vote: Yes: 6; No: 0

The Jenkins Access Area has been enrolled in the Access and Habitat program since 2008. This project proposes to pay Rich Jenkins \$2.40 per acre for 8,187 acres of “Welcome to Hunt” access and \$1.08 per acre for 4,770 acres of “By Permission” access in the Steens Mountain Wildlife Management Unit near Diamond, OR from August 1 to March 15 for one year beginning fall of 2021. Vehicle access will continue to be limited to designated private access road, BLM roads, and existing county roads. No vehicle Access will be allowed off designated roads and due to resource concerns no ATVs are allowed on property.



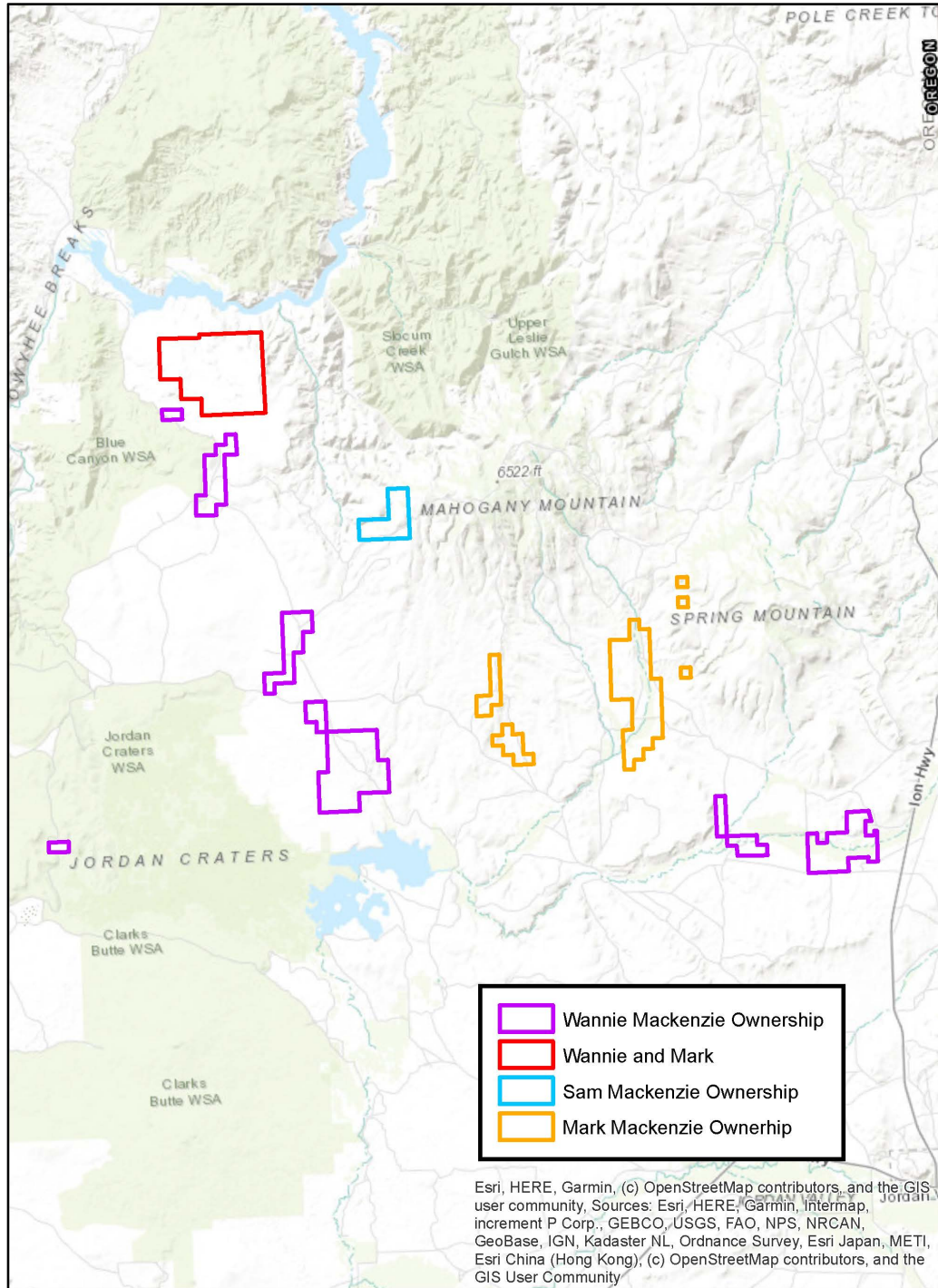
## 2021-12 Mackenzie Access Area

- A&H Funds: \$132,348, (\$26,470 a year)
- Cost Per Acre: \$2.40 a year
- Cooperator Funds: \$4,500
- Total Project Cost: \$136,848
- Applicant: Mark Mackenzie, Sam Mackenzie, and Duncan Mackenzie
- Location: Owyhee Wildlife Management Unit
- Access Acres: 11,029 Welcome to Hunt
- Access Duration: August 2021 - March 2026
- Board Vote: Yes: 6; No: 0

This is a renewal of the Mackenzie Access Area that originated in 2006. The project provides Welcome to Hunt access to 11,029 acres for five years. The project is located on the east side of the Owyhee River just northwest of Jordan Valley. The access area is composed of rocky cliffs, juniper stringers, desert seeps, and sagebrush grasslands. The access area receives heavy use from deer hunters, High Desert elk hunters, antelope hunters, bighorn sheep hunters, predator hunters and upland bird hunters. Due to its proximity to the Boise/Nampa/Caldwell area, a large proportion of the upland bird hunters who use this access area are non-residents.

The Mackenzie Ranch has also conducted habitat improvement projects to control medusahead, construct spring improvements, and repair watering sites funded through the Oregon Open Fields program. Lastly, the Mackenzie Ranch has received funding for wildfire reseeding through the A&H program.

# Mackenzie Ranch Ownership



## 2021-13 Pine Creek Ranch Access

- A&H Funds: \$145,250, (\$29,050 a year)
- Cost per Acre: \$2.40 a year
- Cooperator Funds: \$400
- Total Project Cost: \$145,650
- Applicant: Donald Dryer
- Location: Malheur River Wildlife Management Unit
- Access Acres: 12,104 Welcome to Hunt
- Project Duration: August 2021-March 2026
- Board Vote: Yes: 6; No: 0

This is a renewal of a project originally enrolled in the A&H program in 2011. This project proposes to pay \$2.40 per acre for “Welcome to Hunt” access to 12,104 acres in the Malheur River Wildlife Management Unit, near Drewsey, OR, from August 1 to March 1 for 5 years. The access area is composed of diverse wildlife habitats including aspen, fir, pine, juniper, mountain shrubs, and meadows. This access area provides public hunting opportunities for deer, elk, pronghorn, turkeys and predators. It enhances the access to adjacent public land. The project provides access for damage cow elk hunters and assists with meeting elk management objectives. Mr. Dryer is an active participant in many Natural Resource Conservation Service programs and works diligently to conserve wildlife habitat on the ranch.



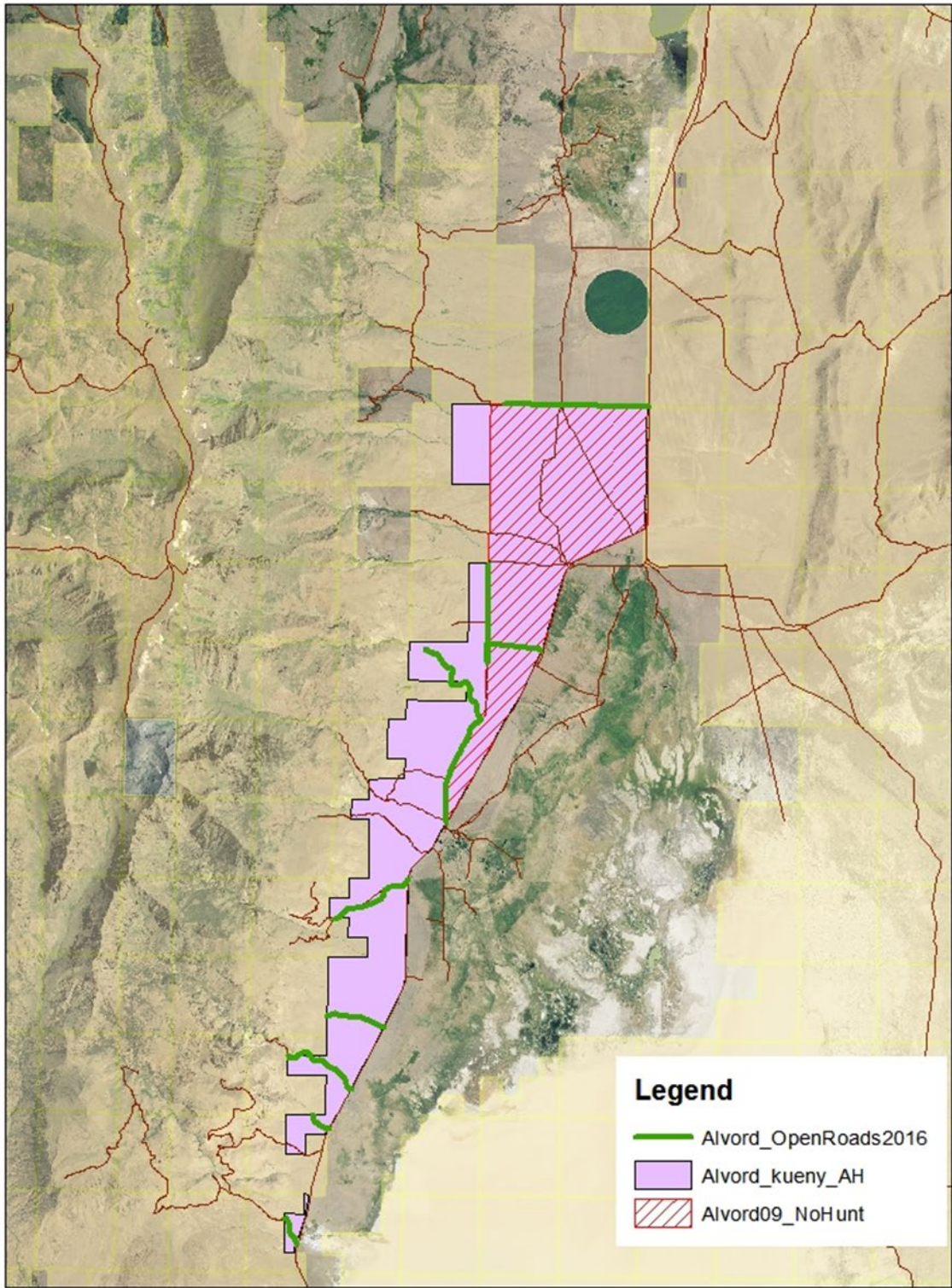
## 2021-14 Alvord Ranch Access Area

- A&H Funds: \$30,000, (\$10,000 a year)
- Cost per Acre: \$2.83 a year
- Cooperator Funds: \$24,915
- Total Project Cost: \$54,915
- Applicant: Paul Davis
- Location: Steens Wildlife Management Unit
- Access Acres: 3,532 Welcome to Hunt  
Improves access to ~16,000 of public land
- Project Duration: August 2021-March 2024
- Board Vote: Yes: 6; No: 0

This renewal of a project started in 2007 proposes to pay \$10,000 of A&H funds per year for three years of “Welcome to Hunt” access to 3,532 acres of private land, including the use of ranch roads allowing access to thousands of acres of otherwise difficult to access public property on the east side of Steens Mountain. In recognition of the importance of the area to upland bird hunters, particularly chukar hunters, the Upland Bird Stamp Program will continue to provide matching funds, \$4,305 annually. In addition to upland bird hunters, primarily hunting chukar and quail, this project provides access for hunting mule deer, bighorn sheep, pronghorn antelope, and predators. Hunters would need to check-in at the Alvord Hot Springs prior to hunting.

The Steens Mountain area is one of the most popular areas in Harney County due to the diverse hunting opportunities. The Alvord Ranch Access Area stretches along approximately 11 miles of the east face of the Steens Mountain. Without this access area the public land behind the ranch would be extremely difficult to access from the top of the mountain during the dry months of the year and would be impossible to access during winter months. The Alvord Access Area stretches along approximately 11 miles of the east face of Steens Mountain. This project provides motorized access on open roads through the property to adjacent BLM lands. Approximately nine miles of ranch roads receive heavy use by hunters during the wet winter months which result in considerable additional maintenance costs to the ranch. The ranch property offers excellent hunting and provides a tremendous benefit to hunters by providing access to adjacent public lands.

# Alvord Access Area Open Roads

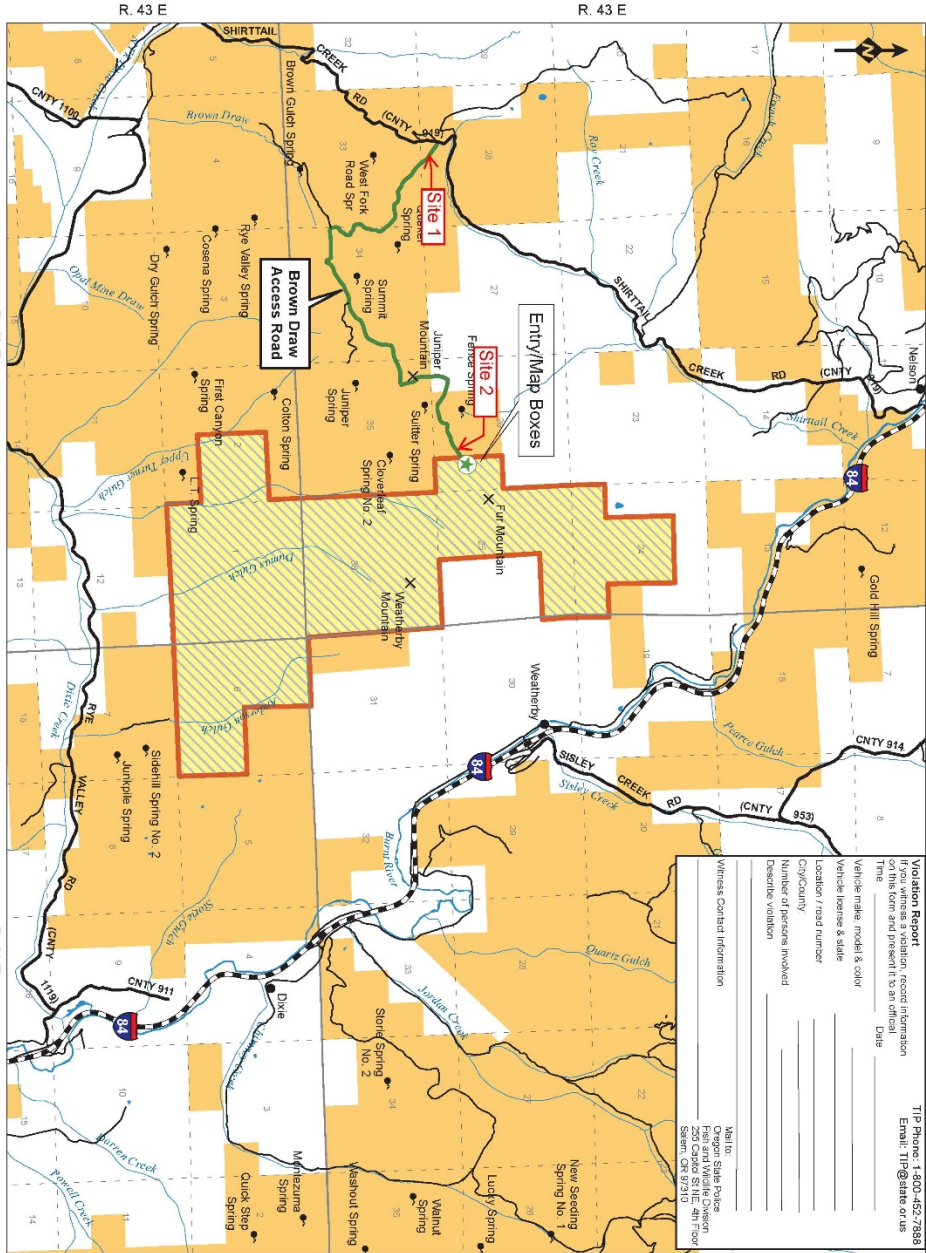


## 2021-15 Fur Mountain Access Area

- A&H Funds: \$32,905 (\$6,581 a year)
- Cost per Acre: \$2.40 a year
- Cooperator Funds: \$2,500
- Total Project Cost: \$35,405
- Applicant: Gary and Kathy Bloomer
- Location: Sumpter Wildlife Management Unit
- Access Acres: 2,742 Welcome to Hunt  
120 Inaccessible public land
- Project Duration: August 2021-January 2026
- Board Vote: Yes: 6; No: 0

This is a restart of a project started in 2009. In 2016 the landowner made the decision to opt out of the A&H program. The project proposes to pay \$2.40 an acre for “Welcome to Hunt” access on 2,742 acres of private land in the Sumpter Wildlife Management Unit for a period of 5 years to hunt big game and upland game birds. Available species include mule deer, Rocky Mountain elk, bear, cougar, coyote, Hungarian partridge, chukar, California quail and grouse. The Fur Mountain Access Area would also provide the only access point to 120 acres of completely inaccessible public lands.

This project will assist the Baker Wildlife District in dealing with elk damage that is currently occurring on surrounding private lands by providing public hunting access to private land and inaccessible public land. A hunt structure that allows hunters to pursue elk from early October through the end of January is currently in place. Continuing to provide greater access to private lands can increase hunter success and assist in addressing private lands damage complaints and elk distribution issues.



# Fur Mountain Access Area



The Fur Mountain Access Area is a cooperative program between a private landowner and the Oregon Department of Fish and Wildlife Access and Habitat Program to maintain public hunting access on private lands and increase access to public land. The Fur Mountain Access Area west of Weatherby, OR provides public hunting opportunities for deer, elk, pronghorn, predators, chukar, Hungarian partridge, forest grouse, and quail. All Oregon Department of Fish and Wildlife Regulations and Seasons apply.

**Access Allowed:**  
 August 1 - January 31

No permission is required to hunt on the Fur Mountain Access Area. The area is surrounded by both public and private lands and you are responsible for knowing property boundaries. Do Not Trespass on surrounding private lands.

Hunting on private lands is a privilege, not a right. Private land hunting opportunities will remain in the future only if the property and rights of private landowners are respected! Abuse it and you will lose it!

**Area Regulations:**

- No camping or night-time use of private land
- No fires, be careful with cigarettes
- Respect landowner's needs
- Leave all gates as you find them
- No littering, pick up any trash
- Motorized travel restricted
- Report unlawful activities
- Welcome to Hunt!



This product is for informational purposes and may not have been prepared for, or the sale of, legal, engineering, or accounting purposes. Users of this information should review the original product for any restrictions or conditions that may apply.  
 Revised 05/2015

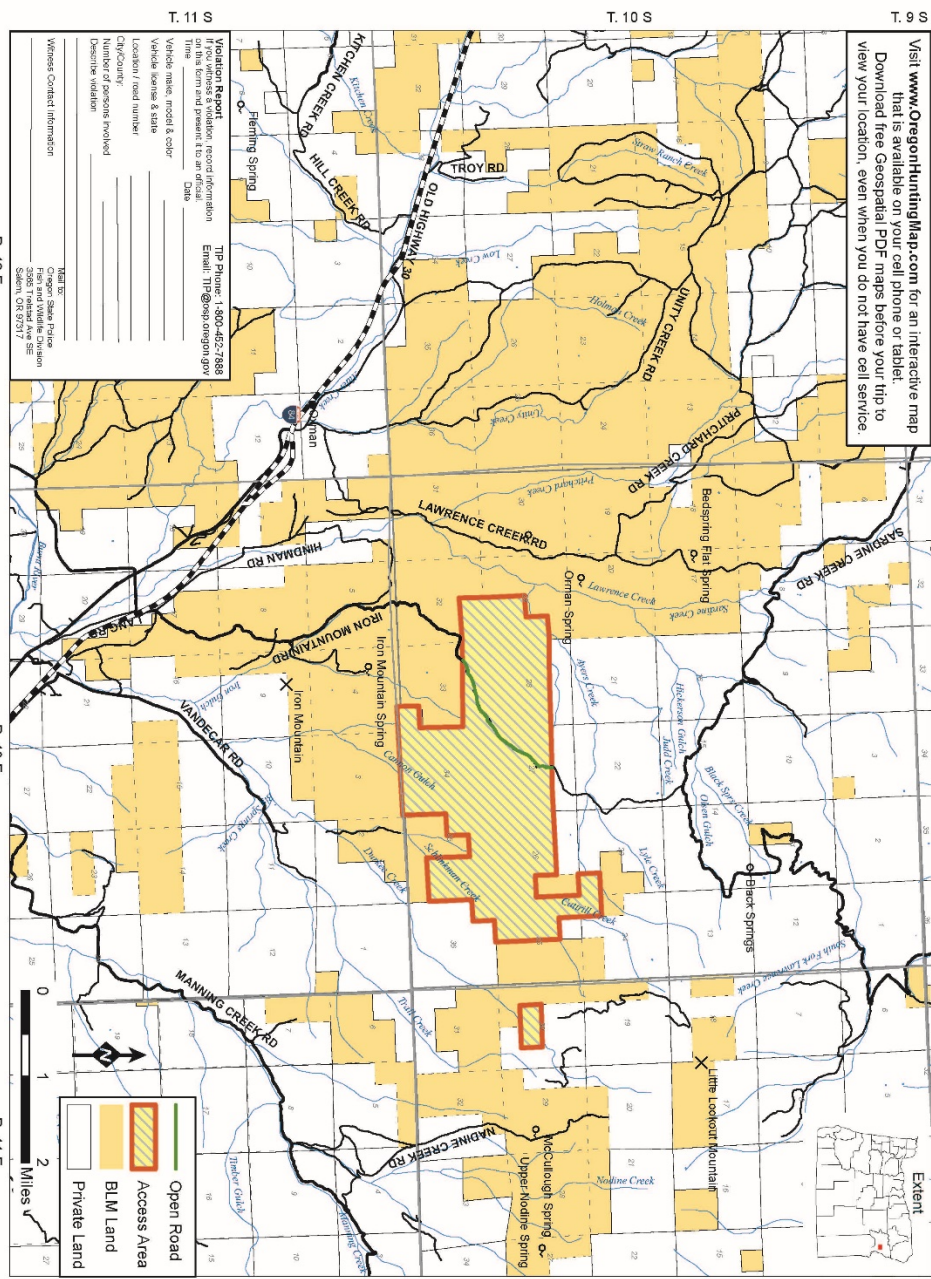
## 2021-16 Iron Mountain Access Area

- A&H Funds: \$40,105 (\$8,021 a year)
- Cost per Acre: \$2.40 a year
- Cooperator Funds: \$2,500
- Total Project Cost: \$42,605
- Applicant: Gary and Kathy Bloomer
- Location: Lookout Mountain Wildlife Management Unit
- Access Acres: 3,342 Welcome to Hunt  
4,215 Inaccessible public land
- Project Duration: August 2021-January 2026
- Board Vote: Yes: 6; No: 0

This is a renewal of a project stated in 2011 and proposes to pay \$2.40/acre for “Welcome to Hunt” access on 3,342 acres of private land in the Lookout Mountain Wildlife Management Unit for a period of 5 years to hunt big game and upland game birds. The Iron Mountain Access Area also provides the only access point to 4,215 acres of completely inaccessible public lands. Historically, the only way to access these landlocked BLM lands was via helicopter or by gaining permission from adjacent private landowners. These 4,215 acres of BLM lands were, and still are, one of the most highly desired tracts of public land in the entire unit. The sheer remoteness and the quality of big game and upland game bird opportunity that these properties provide are what attract so many hunters each year.

The Lookout Mountain Wildlife Management Unit is the highest priority area for Baker Wildlife District to maintain or open private land public hunting access. Until recently, elk tag numbers in this unit have remained constant. However, thanks to the partnership between several private landowners and the A&H program, the department has added a late season cow hunt structure that helps address big game distribution and damage concerns throughout the unit. The continued partnership between is necessary to help alleviate the overcrowding of hunters on the limited public lands and assist in addressing big game damage complaints and elk distribution issues.

Visit [www.OregonHuntingMap.com](http://www.OregonHuntingMap.com) for an interactive map that is available on your cell phone or tablet. Download free Geospatial PDF maps before your trip to view your location, even when you do not have cell service.



# Iron Mountain Access Area

The Iron Mountain Access Area is a cooperative program between a private landowner and the Oregon Department of Fish and Wildlife Access and Habitat Program to maintain public hunting access on private lands and increase access to public land. The Iron Mountain Access Area southeast of Baker City, OR provides public hunting opportunities for deer, elk, pronghorn, predators, chukar, Hungarian partridge, forest grouse, and quail. All Oregon Department of Fish and Wildlife Regulations and Seasons apply.

**Access Allowed:**  
Aug. 1 - Jan. 31

No permission is required to hunt on the Iron Mountain Access Area. The area is surrounded by both public and private lands and you are responsible for knowing property boundaries. Do Not Trespass on surrounding private lands.

Hunting on private lands is a privilege, not a right. Private land hunting opportunities will remain in the future only if the property and rights of private landowners are respected! Abuse it and you will lose it!

**Area Regulations:**

- Motorized vehicles only on open roads
- No camping or night-time use of private land
- No fires, be careful with cigarettes
- Respect landowners rights and needs
- Leave all gates as you found them
- No littering, pick up any trash
- Report unlawful activities



This program is a cooperative effort between the Oregon Department of Fish and Wildlife, the Town of Baker, and the Iron Mountain Access Area landowner. For more information, contact the Oregon Department of Fish and Wildlife, Access and Habitat Program, 2000 NE Oregon Street, Baker, OR 97603. Phone: 503-535-2200. Fax: 503-535-2201. Email: [ahp@odfw.gov](mailto:ahp@odfw.gov)

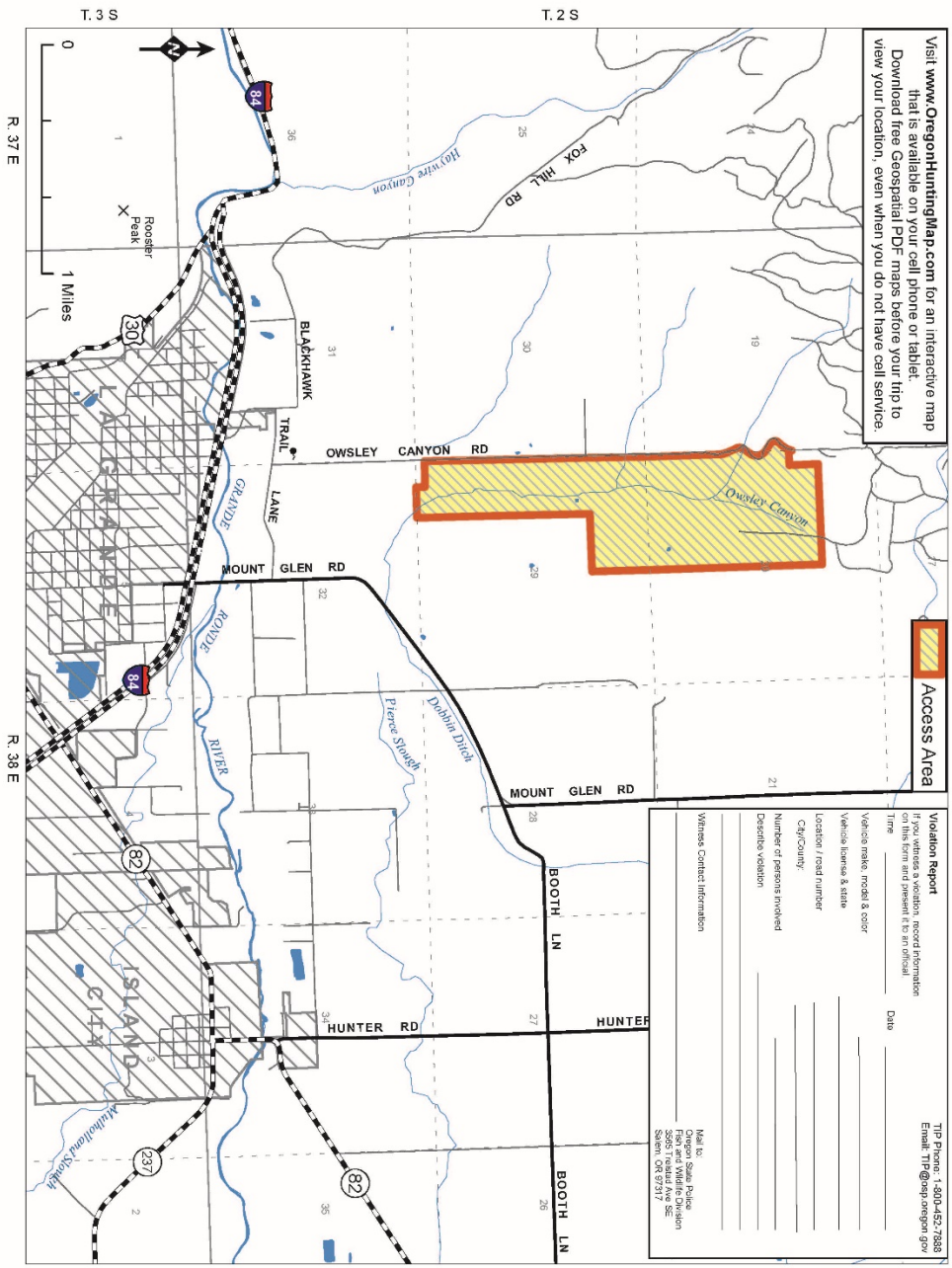
## 2021-17 Owsley Canyon Access Area

- A&H Funds: \$2,610 (\$870 a year)
- Cost per Acre: \$2.00 a year
- Cooperator Funds: \$1,500
- Total Project Cost: \$4,110
- Applicant: Luke Shaw
- Location: Mount Emily Wildlife Management Unit
- Access Acres: 435 Welcome to Hunt
- Project Duration: August 2021 - January 2024
- Board Vote: Yes: 6; No: 0

This is a renewal of a project started in 2009. This project proposes to continue to pay Luke Shaw \$2.00/acre for “Welcome to Hunt” access on 435 acres of private land in the East Mt. Emily Wildlife Management Unit for a period of three years to hunt big game and upland game birds. Available species include mule deer, Rocky Mountain elk, bear, cougar, ruffed grouse, Hungarian partridge, turkey, pheasant, and California quail.

This area of the East Mt. Emily Unit has a long-standing history of chronic elk damage. All adjacent private lands are either managed as rangeland or are being utilized for commercial row crop production. Increasing hunter access to private lands can help influence elk distribution in this area.

In addition to the A&H projects, the department has also cooperatively completed forage seeding(s), fertilizer applications and noxious weed control projects to help improve range conditions for wildlife on Mr. Shaw’s land.



# Owsley Canyon Access Area

The Owsley Canyon Access Area is a cooperative program between a private landowner and the Oregon Department of Fish and Wildlife Access and Habitat Program to maintain public hunting access on private lands and increase access to public land. The Owsley Canyon Access Area north of La Grande, OR provides public hunting opportunities for deer, elk, predators, Hungarian Partridge, pheasant, turkey, and quail. All Oregon Department of Fish and Wildlife Regulations and Seasons Apply.

**Access Allowed:**  
 April 1 - January 31

No permission is required to hunt on the Owsley Canyon Access Area. The area is surrounded by private lands and you are responsible for knowing property boundaries. Do Not Trespass on surrounding private lands. Hunting on private lands is a privilege, not a right. Private land hunting opportunities will remain in the future, only if the property and rights of private landowners are respected. Advise it and you will lose it!

**Area Regulations:**

- No camping or night-time use of private land
- No fires, be careful with cigarettes
- Respect landowner's rights and needs
- Leave all gates as you found them
- No littering, pick up any trash
- Report unlawful activities
- Welcome to Hunt
- Motorized travel restricted
- NO COYOTE HUNTING



ODFW PUNCHERS  
 OREGON DEPARTMENT OF FISH AND WILDLIFE

TIP Phone: 1-800-452-7368  
 Mobile phone: ODFW or 8177

"This product is for informational purposes and may not have been prepared by, or the author is not a professional engineer, geologist, or surveying professional. Users of this information should review or consult primary data and information sources to ascertain the usability of the information."  
 Revised 02/2010

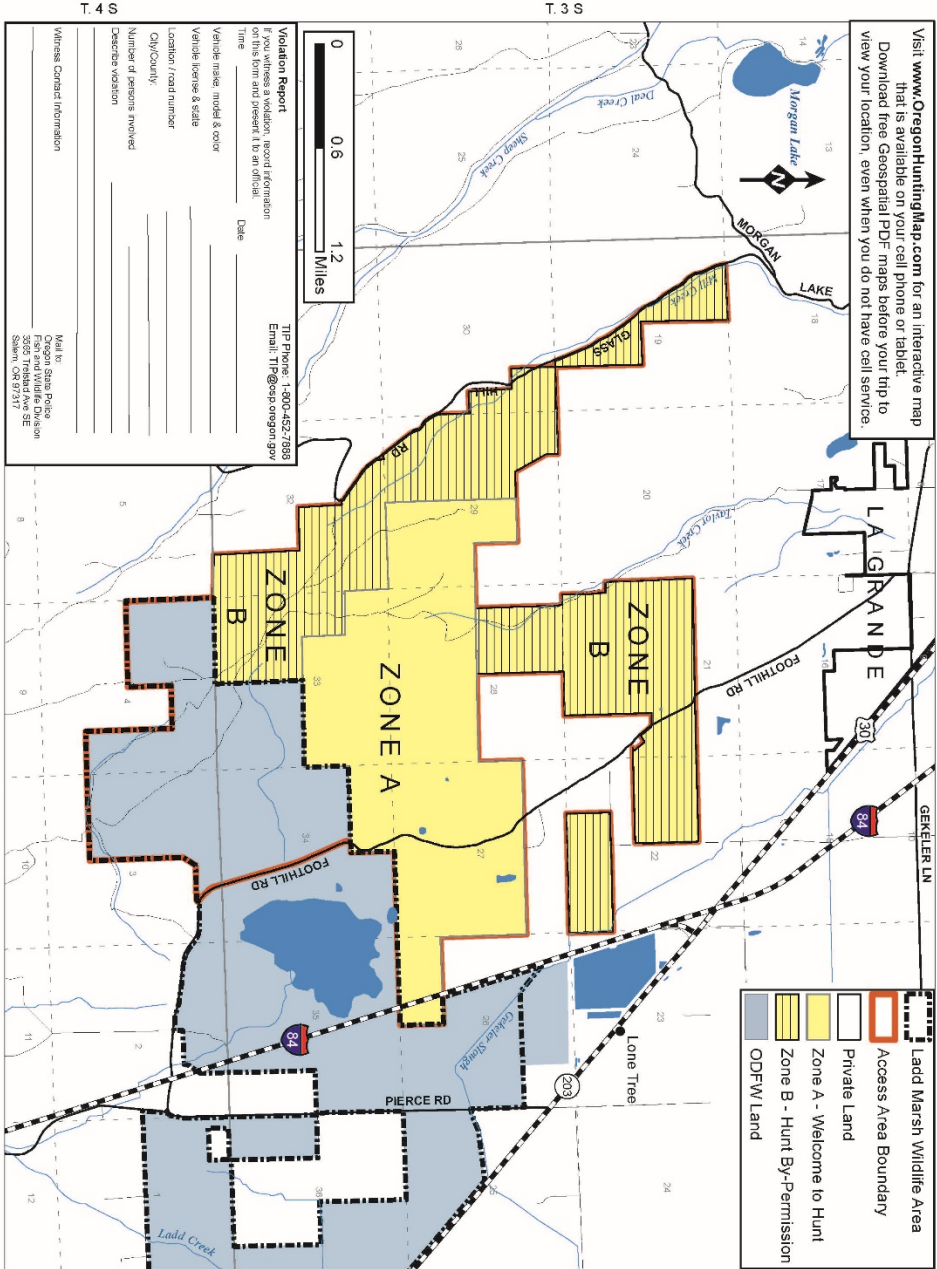
## 2021-18 Smutz Access Area

- A&H Funds: \$10,605 (\$3,535 a year)
- Cost per Acre: \$2.50 a year
- Cooperator Funds: \$1,500
- Total Project Cost: \$12,105
- Applicant: Irwin Smutz
- Location: Starkey Wildlife Management Unit
- Access Acres: 1,414 Welcome to Hunt
- Project Duration: August 2021-January 2024
- Board Vote: Yes: 6; No: 0

This is a renewal of a project started in 2008. The project proposes to pay \$2.50/acre for “Welcome to Hunt” access to 1,414 acres of private land in the Starkey Wildlife Management Unit for a period of 3 years to hunt big game, predators, waterfowl and upland game birds. The species available to hunters include mule deer, white-tailed deer, Rocky Mountain elk, bear, cougar, coyote, pheasant, blue and ruffed grouse, Hungarian partridge, California quail and wild turkey.

The project is part of the Glass Hill Access Area, Zone A in the map on the next page, with two additional private landowners and a parcel of Ladd Marsh Wildlife Area. Providing access to this block of land has substantially improved hunter access and success in an area of the Starkey Wildlife Management Unit that is highly desired by the hunting public and decreased chronic elk damage on private lands.

In addition to the numerous A&H projects, the department has cooperatively completed the installation of wildlife friendly fencing, forage seeding(s), fertilizer applications and noxious weed control projects to improve range conditions for wildlife on Mr. Smutz’s land.



Visit [www.OregonHuntingMap.com](http://www.OregonHuntingMap.com) for an interactive map that is available on your cell phone or tablet. Download free Geospatial PDF maps before your trip to view your location, even when you do not have cell service.

**Violation Report**  
 If you witness a violation, record information on this form and present it to an official.  
 Name \_\_\_\_\_ Date \_\_\_\_\_  
 Vehicle make, model & color \_\_\_\_\_  
 Vehicle license & state \_\_\_\_\_  
 Location / road number \_\_\_\_\_  
 City/County \_\_\_\_\_  
 Number of persons involved \_\_\_\_\_  
 Describe violation \_\_\_\_\_  
 Witness Contact Information \_\_\_\_\_  
 Mail to: Oregon State Police, 5600 Industrial Ave. SE, Salem, OR 97317  
 TTP Phone: 1-800-452-7885, Email: TTP@osp.oregon.gov

# Glass Hill Access Area

The Glass Hill Access Area is a cooperative program between several private landowners and the Oregon Department of Fish and Wildlife Access and Habitat Program to maintain public hunting access on private lands and increase access to public land. The Glass Hill Access Area south of La Grande, OR provides public hunting opportunities for deer, elk, pronghorns, Hungarian partridge, pheasant, turkey, and quail. All Oregon Department of Fish and Wildlife Regulations and Seasons apply.

**Access Allowed:**  
 April 1 - January 31

**Access Permission:**  
 Zone A is welcome to hunt however you are responsible for knowing property boundaries. Do NOT trespass on surrounding private lands. Hunters must obtain permission prior to hunting within Zone B. Permission can be obtained by contacting the landowner at 541.952.2183. Hunters can also call the Oregon Department of Fish and Wildlife at 541.952.2183. Hunters must be on foot, on a private landowner's property, and must be on foot, on a private landowner's property, and must be on foot, on a private landowner's property. Hunters who make reservations to hunt during a particular week, are ineligible to hunt the area the following week. Landowners reserve the right to refuse permission and close areas due to normal ranch operations. Hunting on private lands is a privilege, and a right. Private land hunting opportunities will remain in the future only if the property and rights of private landowners are respected. Abuse it and you will lose it!

- Area Regulations:**
- Hunting access by permission only
  - In Zone B
  - No camping or night-time use of private land
  - No fires, be careful with cigarettes
  - No littering, pick up any trash
  - Report unlawful activities
  - Respect landowners rights and needs
  - Leave all gates as you found them

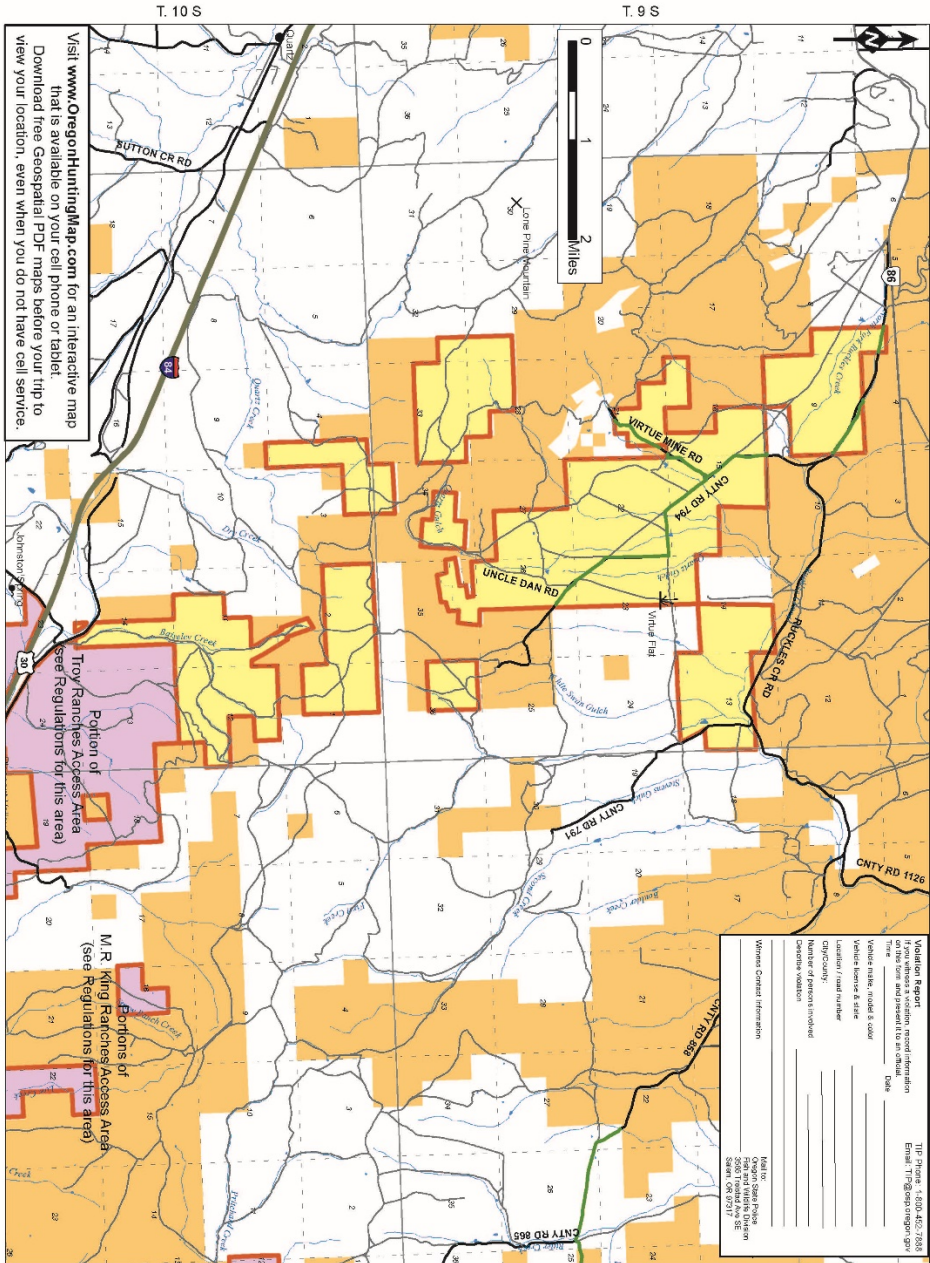
© 2007 Oregon Department of Fish and Wildlife  
 Oregon State Police  
 Glass Hill Access Area  
 Revised 6/2007

## 2021-19 Virtue Flat Access Area

- A&H Funds: \$63,785 (\$12,757 a year)
- Cost per Acre: \$1.80 a year
- Cooperator Funds: \$2,500
- Total Project Cost: \$66,286
- Applicant: Rex Nelson
- Location: Lookout Mountain Wildlife Management Unit
- Access Acres: 7,087 Welcome to Hunt
- Project Duration: August 2021-January 2026
- Board Vote: Yes: 6; No: 0

This project originated in 2016 and proposes to pay \$1.80/acre for “Welcome to Hunt” access on 7,087 acres of private land in the Lookout Mountain Wildlife Management Unit for a period of 5 years to hunt big game and upland game birds. Hunttable species include mule deer, pronghorn antelope, Rocky Mountain elk, bear, cougar, coyote, Hungarian partridge, chukar and California quail. This project will also improve access to adjacent A&H program lands (Troy Ranches) and 10,848 acres of BLM lands.

In addition to the A&H hunt program, Mr. Nelson has been working cooperatively with the Natural Resource Conservation Service, U.S. Fish & Wildlife Service, Tri County Cooperative Weed Management Area and the department to conduct habitat improvements for sage-grouse on his property. Those improvements include the installation of wildlife friendly fencing, noxious weed control and the completion of numerous water developments. These improvements have directly benefited sage-grouse, mule deer populations and other upland game bird populations.



# Virtue Flat Access Area

The Virtue Flat Access Area is a cooperative program between a private landowner and the Oregon Department of Fish and Wildlife's Access and Habitat Program to maintain public hunting access on private lands and to increase access to public lands. The Virtue Flat Access Area, 4.5 miles east of Baker City, OR, provides public hunting opportunities for deer, elk, pronghorn antelope, predators, Hungarian partridge, forest grouse, and quail. All Oregon Department of Fish and Wildlife Regulations and Seasons Apply.

## Access Allowed: In Effect Year Round

Hunting on Private Land is a privilege, not a right. Private land hunting opportunities will remain in the future only if the property and rights of private landowners are respected. Abuse it and you will lose it!

## Area Regulations:

- Motorized vehicles only on open roads
- No camping or nighttime use of private lands
- No fires, be careful with cigarettes
- No littering, please pack out
- Report any illegal activity
- Respect landowner rights and needs
- Leave all gates as you found them

## Extent



- Access Area Boundary
- Open Access Road
- Other Access Area Boundaries
- US BLM Land
- Other Private Land



This product is for informational purposes and any data has been prepared by the state for legal, engineering, or surveying purposes. Users of this information should review or consult primary data and information sources to ascertain the usability of the information.

©2017 Oregon State Police  
©2017 Oregon Department of Fish and Wildlife  
Printed on Recycled Paper  
5050 NE Oregon Ave, SEAS, OR 97117  
503.734.2222  
www.oregon.gov

Printed on Recycled Paper  
1430 NE Oregon Ave, SEAS, OR 97117  
503.734.2222  
www.oregon.gov

Revised 8/2020

## 2021-20 Widman Access Area

- A&H Funds: \$113,532 (\$17,844 access & \$20,000 habitat per year)
- Cost per Acre: \$2.40 a year for access
- Cooperator Funds: \$147,500
- Total Project Cost: \$261,032
- Applicant: Mike Widman
- Location: Lookout Mountain Wildlife Management Unit
- Access Acres: 7,435 Welcome to Hunt
- Habitat Acres: 600
- Project Duration: August 2021-January 2024
- Board Vote: Yes: 6; No: 0

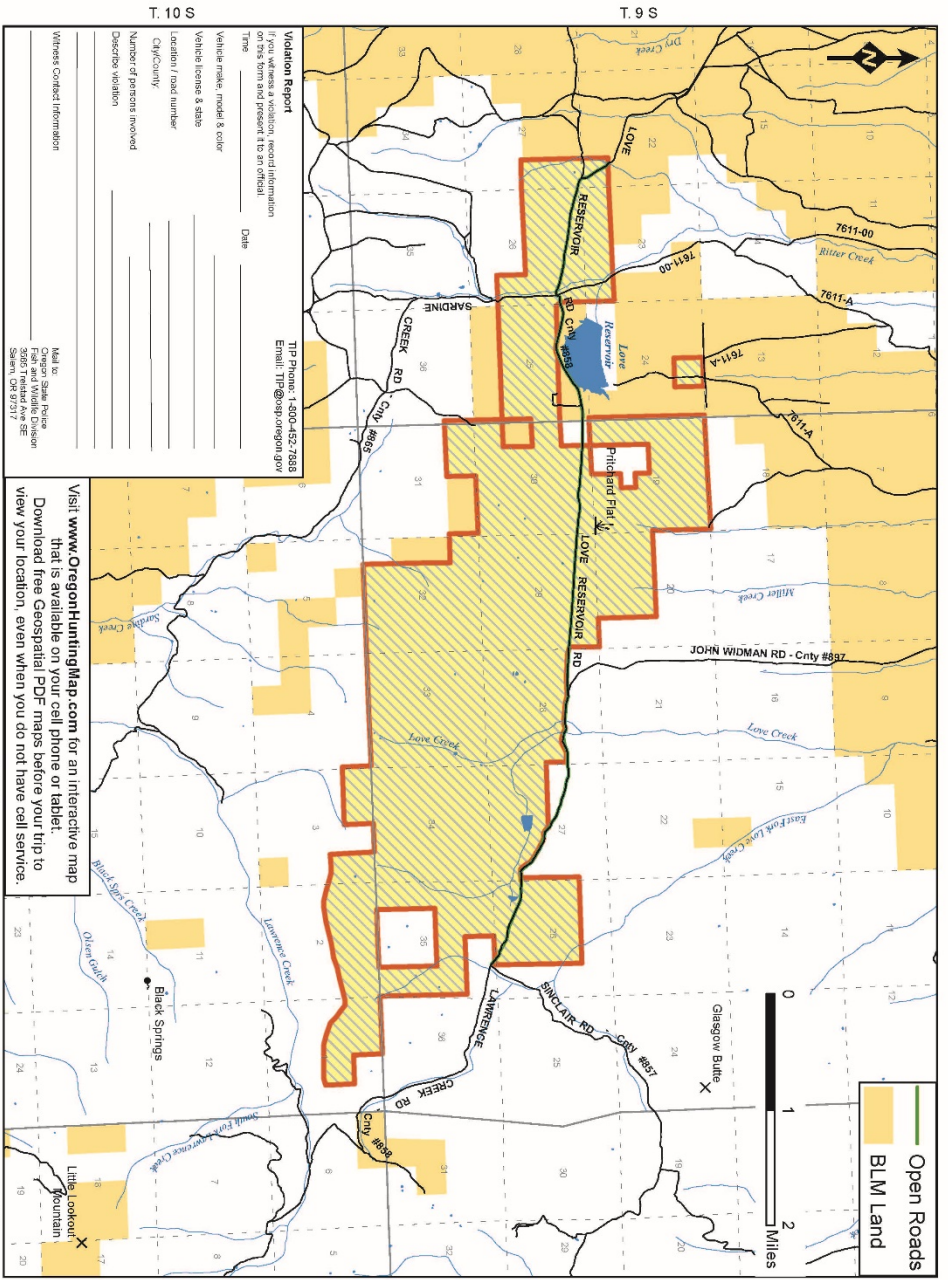
This project proposes to pay \$2.40/acre for “Welcome to Hunt” access on 7,435 acres of private land in the Lookout Mountain Wildlife Management Unit for a period of three years to hunt big game and upland game birds. Available species include mule deer, pronghorn antelope, Rocky Mountain elk, bear, cougar, coyote, Hungarian partridge, chukar, California quail and forest grouse.

The project is also requesting an additional \$20,000/year to continue with wildlife habitat improvement efforts, specifically aimed at treating invasive noxious weeds, i.e. medusahead rye and white-top, re-establishing perennial grasses and improving forb populations. The proposed project will improve big game winter range, enhance year-round upland game bird habitat and directly impact critical sage-grouse habitat.

Additionally, Mr. Widman has been working cooperatively with the Natural Resource Conservation Service, U.S. Fish & Wildlife Service, Tri County Cooperative Weed Management Area and the department to conduct habitat improvements on his property. Listed below are the habitat improvement projects that have been completed to date:

- 2010: A Conservation Reserve Enhancement Program grant from the Natural Resource Conservation Service to improve riparian habitat on several miles of Lawrence Creek. The project included riparian fencing, shrub planting, juniper removal and weed control.
- 2012 & 2016: Partnered with the Baker Valley Soil and Water Conservation District and A&H’s Open Fields to enhance wildlife habitat by treating invasive annual grass and seeding rangelands with desirable grasses and forbs.
- 2020 & 2021: Secured Oregon Watershed Enhancement Board, Focused Investment Partnership funding to improve wildlife habitat by treating invasive annual grass and seeding rangelands with desirable grasses and forbs. Rangeland health is being evaluated on lands where treatments have occurred.

The project’s cost per acre has gone up from \$2.00 to \$2.40 an acre for access, a total cost increase of \$2,974 per year, a reflection of the habitat improvements on the property.



**Violation Report**

You witness a violation, record information of the violation and present it to an officer.

Time \_\_\_\_\_ Date \_\_\_\_\_

Vehicle make, model & color \_\_\_\_\_

Location / road number \_\_\_\_\_

City/County \_\_\_\_\_

Number of persons involved \_\_\_\_\_

Description violation \_\_\_\_\_

Witness Contacted Information \_\_\_\_\_

Mail to: Oregon State Police, 38657 Redland Ave SE, Salem, OR 97317

TIP Phone: 1-800-452-7388  
Email: TIP@osp.oregon.gov

Visit [www.OregonHuntingMap.com](http://www.OregonHuntingMap.com) for an interactive map that is available on your cell phone or tablet. Download free Geospatial PDF maps before your trip to view your location, even when you do not have cell service.

# Widman Access Area



The Widman Access Area is a cooperative program between a private landowner and the Oregon Department of Fish and Wildlife Access and Habitat Program to maintain public hunting access on private lands and increase access to public land. The Widman Access Area east of Baker City, OR provides public hunting opportunities for deer, elk, pronghorn antelope, predators, Hungarian partridge, quail, and quail. All Oregon Department of Fish and Wildlife Regulations and Seasons apply.

**Access Allowed:**  
August 1 - January 31

No permission is required to hunt on the Widman Access Area. The area is surrounded by both public and private lands and you are responsible for knowing property boundaries. Do Not Trespass on surrounding private lands.

Hunting on private lands is a privilege, not a right. Private land hunting opportunities will remain in the future only if the property and rights of private landowners are respected! Abuse it and you will lose it!

**Area Regulations:**

- No camping or night-time use of private land
- No fires, be careful with cigarettes
- Respect landowners rights and needs
- Leave all gates as you found them
- No littering, pick up any trash
- Report unlawful activities
- No motorized vehicles off of county roads within boundary

Extent



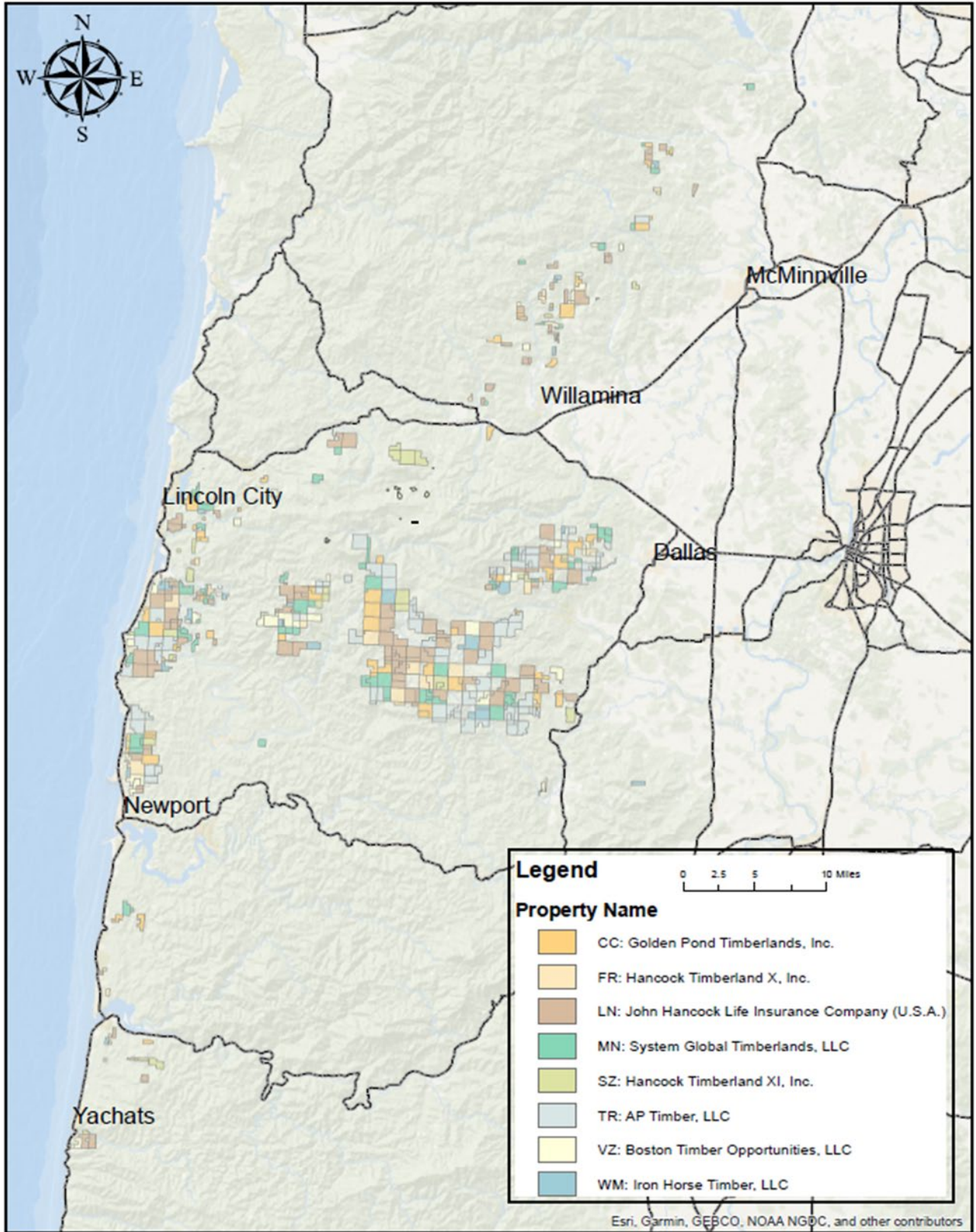
This product is for informational purposes and may not have been prepared by, or be suitable for, legal, engineering, or surveying purposes. Users of this information should review or contact primary data and information sources to determine the quality of the information. (revised 6/2020)

## 2021-21 Hancock Westside Access

- Open Fields Funds: \$334,170, (\$111,390 a year)
- Cost per Acre: \$1.00 a year
- Cooperator Funds: \$465,000
- Total Project Cost: \$799,170
- Applicant: Hillary Freeberg for Hancock Forest Management
- Location: Alesia, Stott Mountain, and Trask Wildlife Management Units
- Access Acres: 111,390 Welcome to Hunt
- Project Duration: July 2021-June 2024
- Board Vote: Yes: 6; No: 0

This is a continuation of the Hancock Westside Access project originally approved in 2018. The project provides Welcome to Hunt public access for approximately 111,390 acres of managed forest. Access would be a combination of drive-in and walk-in. Outside of fire season (as declared by Oregon Department of Forestry), walk in access is allowed in all areas covered by the program, drive in access is allowed on open roads only. Gates or signs will indicate the roads that are closed for driving. During fire season, open roads will be accessible under Industrial Fire Precaution Level (IFPL) 1 and 2 and all roads closed to driving on IFPL 3 and 4. Walk in is allowed under IFPL 1-3. All public access is closed under IFPL 4. Hancock Forest Management will maintain all roads, gates and signs. The proposal is for \$111,390 annually.

# Hancock Westside Access Map



## 2021-22 OSP Enforcement for A&H 2021-2023

- A&H Funds: \$625,312 (\$312,656 a year)
- Existing Projects \$228,198 (approved A&H Enforcement project funding)
- Cost per Acre: ~\$0.53 a year
- Cooperator Funds: \$571,220
- Total Project Cost: \$1,424,730
- Applicant: ODFW on behalf of the project cooperators
- Location: Multiple Wildlife Management Units
- Access Acres: 1.6 million private
- Project Duration: July 2021-June 2023
- Board Vote: Yes: 6; No: 0

The Oregon State Police (OSP) enforcement project maintains public access to private timberlands by providing OSP enforcement of A&H travel management area regulations. The project provides funding for Travel Management Area (TMA) enforcement by OSP through the next biennium, June of 2023. Total cost for enforcement is \$853,510, of which \$228,198 is provided by existing approved A&H projects and the remaining \$625,312 coming from this 2021-22 OSP Enforcement project request.

There are six A&H projects that utilize OSP enforcement. Historically, each of these projects was funded individually and utilized OSP's Retired Trooper Program for enforcement. Three of the enforcement projects, Coos Mountain Access, Jackson TMA, and Green Diamond TMA, are currently approved for funding and contribute \$228,198 to the overall cost of the OSP enforcement project. The North Coast TMA was approved for five years but with only one year of enforcement funding for 2020. This 2021-22 OSP Enforcement project provides two additional years enforcement funding for the North Coast TMA. The last two projects, the Willamette Private Lands and East Lane TMA, were brought before the board as five year projects. Both projects were shortened by the A&H Board, the East Lane to two years and Willamette to one year due to uncertainties with funding and OSP discontinuing the Retired Trooper Program. This 2021-22 OSP Enforcement project will extend these two projects for two years.

The 2020-21 agreement between the A&H Program and OSP combined all six existing enforcement projects into one contract. The 2021-22 OSP Enforcement project will continue the process of combining the enforcement portions of six A&H TMAs into one project. The enforcement hours worked would be allocated to the individual A&H projects based on the estimated enforcement hours needed to achieve the objectives for each project. This project will fund two troopers for 3,400 hours a year for two years. However, in order to provide the coverage needed to achieve the objectives of the TMAs OSP will utilize numerous fish and wildlife troopers to patrol them.

The A&H Board passed the project unanimously, to show the importance of enforcement for the TMA projects. However, the A&H Board is concerned with setting the precedent for funding

OSP permanent positions through the A&H program. The A&H Board felt that funding for permanent OSP positions should come from other sources. Historically, these enforcement projects were providing additional seasonal troopers on the ground for enforcement. This iteration of the TMA enforcement projects may make it more difficult to show an additive enforcement effect.

## 2021-23 Weyerhaeuser Access Area

- Open Fields Funds: \$266,871, (\$88,957 a year)
- Cost per Acre: \$1.00 a year
- Cooperator Funds: \$231,000, (\$77,000 a year)
- Total Project Cost: \$497,871
- Applicant: Michelle Metcalf for Weyerhaeuser Company
- Location: Alesa, Stott Mtn., and Trask Wildlife Management Units
- Access Acres: 88,957 Welcome to Hunt
- Project Duration: July 2021-June 2024
- Board Vote: Yes: 5; No: 0; Absent 1

The Weyerhaeuser Access Area is a continuation of a project started in 2018. This area was previously managed by Hancock Forest Management and part of their Westside Access project. The lands were purchased by Weyerhaeuser in 2018 and 2020.

This project will provide public Welcome to Hunt access to approximately 88,957 acres of managed forest. The proposal is for \$88,957 annually for three years utilizing Open Fields funding. Access would be a combination of motorized and non-motorized use. Non-motorized would be allowed in all areas of the access area. Motorized access would be allowed on open roads through designated gates. During designated fire season (as declared by Oregon Department of Forestry), motorized access will be open roads under Industrial Fire Precaution Level (IFPL) 1 and 2 and all roads closed to driving on IFPL 3 and 4. Walk in is allowed under IFPL 1-3. All public access is closed under IFPL 4. Weyerhaeuser will maintain the road system, gates and signs for the access area.

